




Since 2005

**HB PACKAGING**



**余姚市宏邦包装有限公司**  
YUYAO HONGBANG PACKAGING CO., LTD.

 地址: 浙江省余姚市马渚姚西工业园区北祥路2号  
Address: No.2 Beixiang Road West Industrial Park Mazhu,  
Yuyao, Zhejiang, China

 86-574-62456155 62456177

 86-574-62456110

 hb@cnyyjb.com

 www.cnyyjb.com

CAP  
PRO  
—

Beauty & Hair  
Personal & Home Care  
Food & Pharmacy

**2026** Catalogue



# Patent Certification

专利认证

# Brief Introduction

了解宏邦

宏邦包装成立于2005年，主要生产各类塑料翻盖、胶阀盖、双色盖及乳液泵等其他化妆品包材，产品涉及个人护理、美容美发、清洁用品、医药包材、食品包装等相关领域。目前已形成产品设计、模具开发、自动化注塑、自动化装配于一体的完整生产链，确保生产效率和产品品质。

公司始终坚持以创新为动力，设有专业的研发团队和完善的质量管理体系，公司大力倡导环保理念，不断增加PCR,TPE等材料的应用，为品牌客户提供安全可靠的定制产品。

我们始终秉持“合作双赢”的理念，致力于通过创新和高质量的环保产品，提升您的品牌价值。

Founded in 2005, Hongbang Packaging specializes in manufacturing a wide range of plastic packaging solutions, including flip-top caps, valve caps, two-color caps, lotion pumps, and other cosmetic packaging materials. Our products cater to various industries, including personal care, beauty, cleaning products, pharmaceutical packaging, and food packaging. We have established a comprehensive production chain that integrates product design, mold development, automated injection molding, and assembly, ensuring both high production efficiency and superior product quality.

Driven by innovation, the company is supported by a dedicated R&D team and a robust quality management system. We are committed to promoting sustainability by increasing the use of eco-friendly materials, such as PCR and TPE, to provide our clients with safe and reliable customized products.

Guided by the principle of "mutual benefit," we are focused on enhancing your brand value through innovative, high-quality, and environmentally friendly products.





## Dedication

专注

宏邦--20年瓶盖的研发和生产经验，必将满足您对产品  
的不同需求

Hongbang – With over 20 years of experience in quality bottle cap  
and pump production, we are committed to meeting your diverse  
product needs.



## Professional

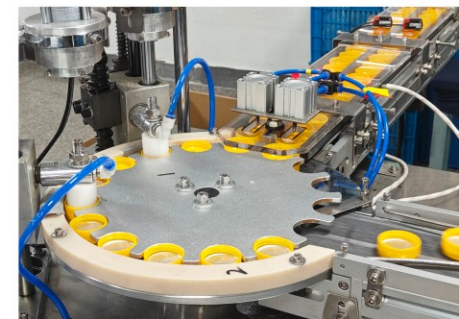
专业

注重环保与世界同步，相信我们的产品能为经验丰富的  
全球合作伙伴赋能，提升品牌价值

We are dedicated to environmental protection and a sustainable  
future. Our high-quality, durable products empower global  
partners to enhance brand value and achieve lasting success.

合作共赢，不断创新.....

— *Constant learning, continuous innovation*

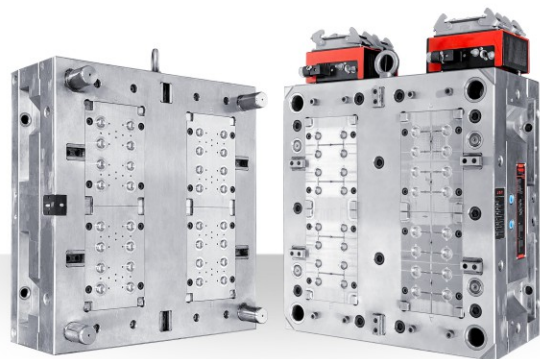
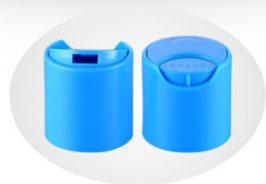
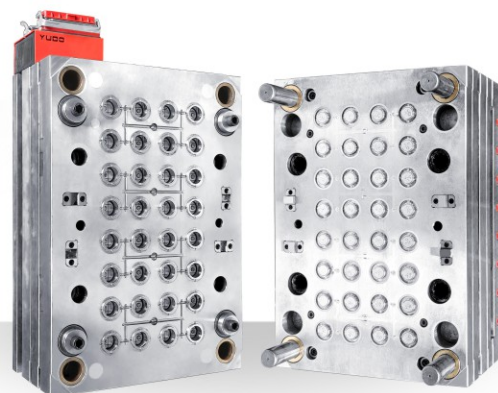
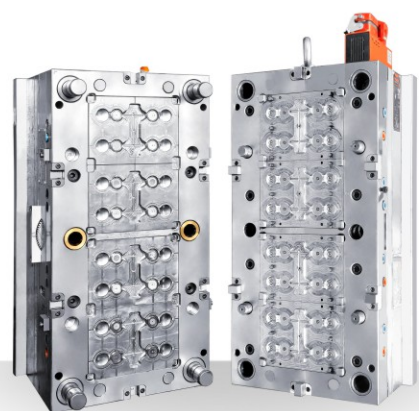


## Tailored Precision Mold Solutions

精密模具制造

优质模具是产品品质的根本保证

The cornerstone of top-tier product quality starts with superior molds.



PP+TPE

## Contents

Bottle Cap  
瓶盖

06

Cream Pump  
油泵

22

Lotion Pump  
乳液泵

29

Trigger Sprayer  
手扣式喷雾

48



**Q18-01**  
Specification:  $\Phi$ 18/410  
Size:  $\Phi$ 21x22(H)mm



**Q18-02**  
Specification:  $\Phi$ 18/415  
Size:  $\Phi$ 21x27(H)mm



**Q20-01**  
Specification:  $\Phi$ 20/410  
Size:  $\Phi$ 23x25(H)mm



**Q20-02**  
Specification:  $\Phi$ 20/415  
Size:  $\Phi$ 23x29(H)mm



**Q20-01L**  
Specification:  $\Phi$ 20/410  
Size:  $\Phi$ 24x26(H)mm



**Q20-02L**  
Specification:  $\Phi$ 20/415  
Size:  $\Phi$ 24x30(H)mm



**Q24-01L**  
Specification:  $\Phi$ 24/410  
Size:  $\Phi$ 28x28(H)mm



**Q24-02L**  
Specification:  $\Phi$ 24/415  
Size:  $\Phi$ 28x36(H)mm



**Q24-01**  
Specification:  $\Phi$ 24/410  
Size:  $\Phi$ 27x27(H)mm



**Q24-01C (matte)**  
Specification:  $\Phi$ 24/410  
Size:  $\Phi$ 27x27(H)mm



**Q24-01D (matte)**  
Specification:  $\Phi$ 24/410  
Size:  $\Phi$ 27x28(H)mm



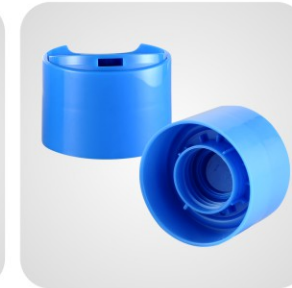
**Q24-02**  
Specification:  $\Phi$ 24/415  
Size:  $\Phi$ 27x35(H)mm



**Q28-01L**  
Specification:  $\Phi$ 28/410  
Size:  $\Phi$ 32x31(H)mm



**Q28-02L**  
Specification:  $\Phi$ 28/415  
Size:  $\Phi$ 32x40(H)mm



**Q24-03**  
Specification:  $\Phi$ 24/410  
Size:  $\Phi$ 48x33(H)mm



**Q24-03A (matte)**  
Specification:  $\Phi$ 24/410  
Size:  $\Phi$ 48x33(H)mm



**Q28-01**  
Specification:  $\Phi$ 28/410  
Size:  $\Phi$ 31x30(H)mm



**Q28-01C (matte)**  
Specification:  $\Phi$ 28/410  
Size:  $\Phi$ 31x30(H)mm



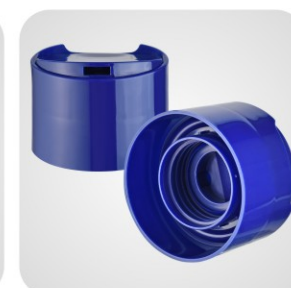
**Q28-01D (matte)**  
Specification:  $\Phi$ 28/410  
Size:  $\Phi$ 31x31(H)mm



**Q28-02**  
Specification:  $\Phi$ 28/415  
Size:  $\Phi$ 31x40(H)mm



**Q24-03L**  
Specification:  $\Phi$ 24/410  
Size:  $\Phi$ 48x33(H)mm



**Q28-04**  
Specification:  $\Phi$ 28/410  
Size:  $\Phi$ 48x33(H)mm



**Q28-04A (matte)**  
Specification:  $\Phi$ 28/410  
Size:  $\Phi$ 48x33(H)mm



**Q20-07A (matte)**  
Specification:  $\Phi$ 20/410  
Size:  $\Phi$ 37x26(H)mm



**Q28-03**  
Specification:  $\Phi$ 28/400  
Size:  $\Phi$ 31x25(H)mm



**Q24-05**  
Specification:  $\Phi$ 24/410  
Size:  $\Phi$ 27x26(H)mm



**Q28-05**  
Specification:  $\Phi$ 28/410  
Size:  $\Phi$ 31x30(H)mm



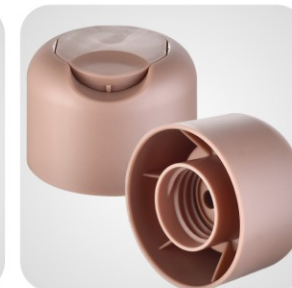
**Q24-06**  
Specification:  $\Phi$ 24/410  
Size:  $\Phi$ 28x27(H)mm



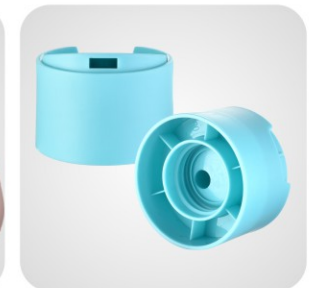
**Q24-07A (matte)**  
Specification:  $\Phi$ 24/410  
Size:  $\Phi$ 37x26(H)mm



**Q24-08 (matte)**  
Specification:  $\Phi$ 24/410  
Size:  $\Phi$ 47x29(H)mm



**Q24-10 (matte)**  
Specification:  $\Phi$ 24/410  
Size:  $\Phi$ 50x35(H)mm



**Q24-11 (matte)**  
Specification:  $\Phi$ 24/410  
Size:  $\Phi$ 44x29(H)mm



**H20-01**  
Specification: Φ20/410  
Size: Φ23x19(H)mm



**H24-01**  
Specification: Φ24/410  
Size: Φ28x22(H)mm



**H28-01**  
Specification: Φ28/410  
Size: Φ31x24(H)mm



**H28-01A (matte)**  
Specification: Φ28/410  
Size: Φ31x25(H)mm



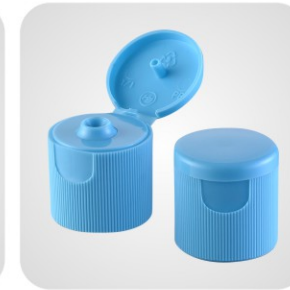
**H13-04**  
Specification: Φ13/415  
Size: Φ15x14(H)mm



**H17-04**  
Specification: Φ17/415  
Size: Φ19x21(H)mm



**H20-04**  
Specification: Φ20/415  
Size: Φ23x24(H)mm



**H24-04**  
Specification: Φ24/415  
Size: Φ27x28(H)mm



**H15-02**  
Specification: Φ15/415  
Size: Φ17x20(H)mm



**H18-02**  
Specification: Φ18/415  
Size: Φ21x22(H)mm



**H20-02**  
Specification: Φ20/415  
Size: Φ23x23(H)mm



**H22-02**  
Specification: Φ22/415  
Size: Φ25x31(H)mm



**H28-04**  
Specification: Φ28/415  
Size: Φ31x33(H)mm



**H20-05**  
Specification: Φ20/415  
Size: Φ22x26(H)mm



**H24-05**  
Specification: Φ24/415  
Size: Φ27x30(H)mm



**H20-06**  
Specification: Φ20/415  
Size: Φ23x25(H)mm



**H22-02A**  
Specification: Φ22/415  
Size: Φ25x24(H)mm



**H24-02**  
Specification: Φ24/415  
Size: Φ27x30(H)mm



**H28-02**  
Specification: Φ28/415  
Size: Φ31x34(H)mm



**H18-03**  
Specification: Φ18/410  
Size: Φ21x19(H)mm



**H24-06**  
Specification: Φ24/420  
Size: Φ28x37(H)mm



**H24-07**  
Specification: Φ24/415  
Size: Φ27x27(H)mm



**H24-07A (matte)**  
Specification: Φ24/410  
Size: Φ38x22(H)mm



**H20-08 (matte)**  
Specification: Φ20/410  
Size: Φ24x23(H)mm



**H20-03**  
Specification: Φ20/410  
Size: Φ23x20(H)mm



**H24-03 (matte)**  
Specification: Φ24/410  
Size: Φ28x22(H)mm



**H24-03A**  
Specification: Φ24/410  
Size: Φ27x21(H)mm



**H28-03**  
Specification: Φ28/410  
Size: Φ31x25(H)mm



**H24-08 (matte)**  
Specification: Φ24/410  
Size: Φ27x26(H)mm



**H24-08A (matte)**  
Specification: Φ24/415  
Size: Φ28x25(H)mm



**H28-08 (matte)**  
Specification: Φ28/410  
Size: Φ31x29(H)mm



**H24-09 (matte)**  
Specification: Φ24/410  
Size: Φ27x23(H)mm



**H24-09A**  
Specification: Φ24/410  
Size: Φ27x23(H)mm



**H28-09 (matte)**  
Specification: Φ28/410  
Size: Φ32x26(H)mm



**H33-09 (matte)**  
Specification: Φ33/410  
Size: Φ36x30(H)mm



**H28-10**  
Specification: Φ28/400  
Size: Φ31x18(H)mm



**H24-16**  
Specification: Φ24/410  
Size: Φ38x25(H)mm



**H24-18**  
Specification: Φ24/410  
Size: Φ27x24(H)mm



**H28-18**  
Specification: Φ28/410  
Size: Φ31x26(H)mm



**H24-19**  
Specification: Φ24/410  
Size: Φ34x33(H)mm



**H20-11**  
Specification: Φ20/410  
Size: Φ23x20(H)mm



**H28-11**  
Specification: Φ28/400  
Size: Φ31x16(H)mm



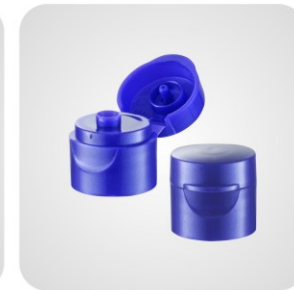
**H32-11**  
Specification: Φ32/400  
Size: Φ35x18(H)mm



**H32-11A**  
Specification: Φ32/400  
Size: Φ35x17(H)mm



**H20-20**  
Specification: Φ20/410  
Size: Φ24x21(H)mm



**H18-21**  
Specification: Φ18/410  
Size: Φ22x22(H)mm



**H24-21**  
Specification: Φ24/410  
Size: Φ28x24(H)mm



**H24-22 (matte)**  
Specification: Φ24/410  
Size: Φ27x22(H)mm



**H38-11**  
Specification: Φ38/400  
Size: Φ40x20(H)mm



**H24-12A**  
Specification: Φ24/410  
Size: Φ32x21(H)mm



**H38-13**  
Specification: Φ38/400  
Size: Φ40x19(H)mm



**H28-14**  
Specification: Φ28/400  
Size: Φ30x16(H)mm



**H20-23**  
Specification: Φ20/410  
Size: Φ23x19(H)mm



**H24-24 (matte)**  
Specification: Φ24/410  
Size: Φ27x21(H)mm



**H33-25**  
Specification: Φ33/400  
Size: Φ35x18(H)mm



**H38-25**  
Specification: Φ38/400  
Size: Φ41x19(H)mm



**H32-14**  
Specification: Φ32/400  
Size: Φ35x16(H)mm



**H38-14**  
Specification: Φ38/400  
Size: Φ41x17(H)mm



**H38-15 (定制款)**  
Specification: Φ38/400  
Size: Φ39x16(H)mm



**H20-16**  
Specification: Φ20/410  
Size: Φ31x25(H)mm



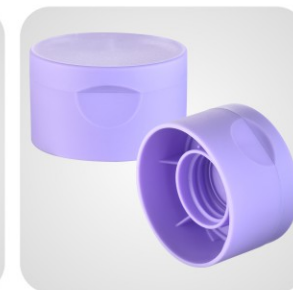
**H38-26**  
Specification: Φ38/400  
Size: Φ41x17(H)mm



**H33-27**  
Specification: Φ33/400  
Size: Φ36x32(H)mm

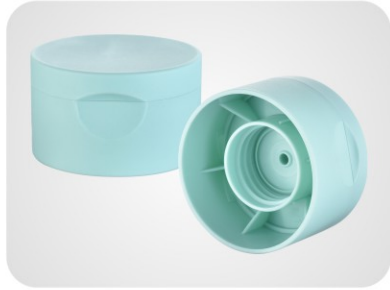


**H38-27**  
Specification: Φ38/400  
Size: Φ41x36(H)mm



**H24-28 (matte)**  
Specification: Φ24/410  
Size: Φ48x29(H)mm

## Flip Top Cap / 蝴蝶结盖系列



**H28-28 (matte)**  
Specification:  $\Phi 28/410$   
Size:  $\Phi 47 \times 28.5(H)$ mm



**H24-29**  
Specification:  $\Phi 24/410$   
Size:  $\Phi 37 \times 23(H)$ mm



**H24-30**  
Specification:  $\Phi 24/410$   
Size:  $\Phi 43 \times 25(H)$ mm

## Tamper Evident Cap / 防拆封盖系列



**K24-01**  
Specification:  $\Phi 24/415$   
Size:  $\Phi 28 \times 32(H)$ mm



**K28-01**  
Specification:  $\Phi 28/415$   
Size:  $\Phi 31 \times 32(H)$ mm



**K28-02**  
Specification:  $\Phi 28/410$   
Size:  $69 \times 45 \times 24(H)$ mm

## Bi-Color Cap / 双色盖系列



**B26-01**  
Specification:  $\Phi 26$ mm(Snap On)  
Size:  $65 \times 37$ mm



**T24-01**  
Specification:  $\Phi 24/410$   
Size:  $\Phi 27 \times 25(H)$ mm



**T28-01**  
Specification:  $\Phi 28/410$   
Size:  $\Phi 31 \times 28(H)$ mm



**T20-02**  
Specification:  $\Phi 20/410$   
Size:  $\Phi 23 \times 22(H)$ mm



**T24-02**  
Specification:  $\Phi 24/410$   
Size:  $\Phi 27 \times 24(H)$ mm



**T28-02**  
Specification:  $\Phi 28/410$   
Size:  $\Phi 31 \times 24(H)$ mm



**T18-03**  
Specification:  $\Phi 18/410$   
Size:  $\Phi 21 \times 21(H)$ mm



**T20-03**  
Specification:  $\Phi 20/410$   
Size:  $\Phi 23 \times 20(H)$ mm



**T24-03**  
Specification:  $\Phi 24/410$   
Size:  $\Phi 28 \times 23(H)$ mm



**T28-03**  
Specification:  $\Phi 28/410$   
Size:  $\Phi 32 \times 27(H)$ mm



**T24-04**  
Specification:  $\Phi 24/410$   
Size:  $\Phi 27 \times 27(H)$ mm



**T28-04**  
Specification:  $\Phi 28/410$   
Size:  $\Phi 30 \times 24(H)$ mm



**T28-04A**  
Specification:  $\Phi 28/410$   
Size:  $\Phi 30 \times 30(H)$ mm



**T32-04**  
Specification:  $\Phi 32/400$   
Size:  $\Phi 35 \times 25(H)$ mm



**T24-05A**  
Specification:  $\Phi 24/410$   
Size:  $\Phi 27 \times 22(H)$ mm



**T28-05A**  
Specification:  $\Phi 28/410$   
Size:  $\Phi 31 \times 25(H)$ mm



**T24-05**  
Specification:  $\Phi 24/415$   
Size:  $\Phi 27 \times 32(H)$ mm

Flip Top Cap / 蝴蝶结盖系列



**T28-05**  
Specification: Φ28/415  
Size: Φ31x35(H)mm



**T20-06**  
Specification: Φ20/410  
Size: Φ24x20(H)mm



**T24-07**  
Specification: Φ24/410  
Size: Φ27x23(H)mm



**T24-08**  
Specification: Φ24/410  
Size: Φ26x22(H)mm



**T28-09**  
Specification: Φ28/410  
Size: Φ31x25(H)mm



**T24-10**  
Specification: Φ24/415  
Size: Φ27x30(H)mm



**T20-12**  
Specification: Φ20/415  
Size: Φ23x24(H)mm



**T24-13**  
Specification: Φ24/415  
Size: Φ27x28(H)mm



**T24-14**  
Specification: Φ24/410  
Size: Φ48x27(H)mm



**T24-15**  
Specification: Φ24/410  
Size: Φ28x24(H)mm



**T28-18**  
Specification: Φ28/410  
Size: Φ31x24(H)mm



**T17-19**  
Specification: Φ17/410  
Size: Φ26x16(H)mm



**T28-20**  
Specification: Φ28/410  
Size: Φ43x23(H)mm

TPE Cap / TPE 胶阀盖系列



TPE 胶阀  
Specification: Φ15mm  
Incision: 5x5mm



TPE 胶阀  
Specification: Φ18mm  
Incision: 7x7mm



**P26-01 (matte)**  
Specification: 26mm(Snap On)  
Size: 60x41mm  
Incision: 5x5mm



**P26-02 (matte)**  
Specification: 26mm(Snap On)  
Size: 66x36mm  
Incision: 5x5mm



**P26-03 (matte)**  
Specification: 26mm(Snap On)  
Size: 56x39mm  
Incision: 5x5mm



220ml



240ml



240ml



260ml



**J22-01 (matte)**  
Specification:  $\Phi 22/415$   
Size:  $\Phi 25 \times 31(H)$ mm



**J24-01 (matte)**  
Specification:  $\Phi 24/415$   
Size:  $\Phi 28 \times 32(H)$ mm



**J20-02**  
Specification:  $\Phi 20/410$   
Size:  $\Phi 23 \times 15(H)$ mm



**J24-02**  
Specification:  $\Phi 24/410$   
Size:  $\Phi 26 \times 17(H)$ mm



**J32-09**  
Specification:  $\Phi 32/400$   
Size:  $\Phi 50 \times 31(H)$ mm



**J24-10**  
Specification:  $\Phi 24/400$   
Size:  $\Phi 28 \times 12(H)$ mm



**J28-02**  
Specification:  $\Phi 28/410$   
Size:  $\Phi 31 \times 17(H)$ mm



**J33-02**  
Specification:  $\Phi 33/400$   
Size:  $\Phi 36 \times 12(H)$ mm



**J38-02**  
Specification:  $\Phi 38/400$   
Size:  $\Phi 40 \times 12(H)$ mm



**J15-03**  
Specification:  $\Phi 15/410$   
Size:  $\Phi 25 \times 21(H)$ mm



**J20-04**  
Specification:  $\Phi 20/415$   
Size:  $\Phi 22 \times 26(H)$ mm



**J24-04**  
Specification:  $\Phi 24/415$   
Size:  $\Phi 26 \times 30(H)$ mm



**J20-05**  
Specification:  $\Phi 20/420$   
Size:  $\Phi 27 \times 36(H)$ mm



**J20-06**  
Specification:  $\Phi 20/410$   
Size:  $\Phi 22 \times 16(H)$ mm



**J24-06**  
Specification:  $\Phi 24/410$   
Size:  $\Phi 26 \times 18(H)$ mm



**J28-06**  
Specification:  $\Phi 28/410$   
Size:  $\Phi 30 \times 19(H)$ mm

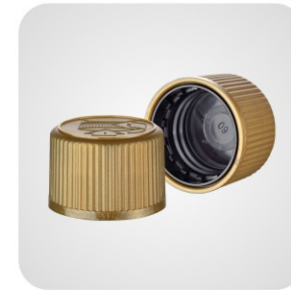


**J24-07**  
Specification:  $\Phi 24/415$   
Size:  $\Phi 26 \times 26(H)$ mm



**J24-08**  
Specification:  $\Phi 24/415$   
Size:  $\Phi 32 \times 27(H)$ mm

CRC Cap / 安全盖, 儿童盖系列



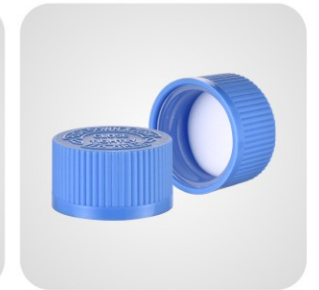
**C24-01**  
Specification:  $\Phi 24/410$   
Size:  $\Phi 32 \times 22(H)$ mm



**C28-01**  
Specification:  $\Phi 28/410$   
Size:  $\Phi 36 \times 24(H)$ mm



**C24-16**  
Specification:  $\Phi 24/410$   
Size:  $\Phi 30 \times 17(H)$ mm



**C28-16**  
Specification:  $\Phi 28/410$   
Size:  $\Phi 35 \times 20(H)$ mm



**C32-16**  
Specification:  $\Phi 32/410$   
Size:  $\Phi 39 \times 17(H)$ mm



**C38-16**  
Specification:  $\Phi 38/400$   
Size:  $\Phi 45 \times 17(H)$ mm



**C45-16**  
Specification:  $\Phi 45/400$   
Size:  $\Phi 52 \times 17(H)$ mm



**C52-16**  
Specification:  $\Phi 52/400$   
Size:  $\Phi 60 \times 17(H)$ mm



**S20-03**  
Specification:  $\Phi 20/410$   
Size:  $\Phi 23 \times 44$ (H)mm



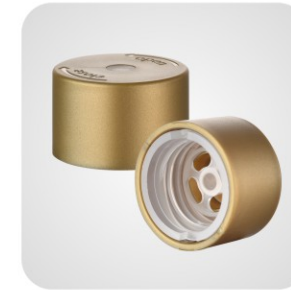
**S24-03**  
Specification:  $\Phi 24/410$   
Size:  $\Phi 27 \times 50$ (H)mm



**S28-03**  
Specification:  $\Phi 28/410$   
Size:  $\Phi 30 \times 51$ (H)mm



**S24-04**  
Specification:  $\Phi 24/410$   
Size:  $\Phi 29 \times 22$ (H)mm



**S24-19 (matte)**  
Specification:  $\Phi 24/410$   
Size:  $\Phi 33 \times 21$ (H)mm



**S24-19A**  
Specification:  $\Phi 24/410$   
Size:  $\Phi 33 \times 21$ (H)mm



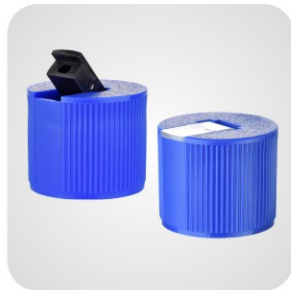
**S24-19L**  
Specification:  $\Phi 24/410$   
Size:  $\Phi 34 \times 21$ (H)mm



**S20-20 (matte)**  
Specification:  $\Phi 20/410$   
Size:  $\Phi 22 \times 43$ (H)mm



**S24-04A (matte)**  
Specification:  $\Phi 24/415$   
Size:  $\Phi 29 \times 26$ (H)mm



**S28-04 (matte)**  
Specification:  $\Phi 28/415$   
Size:  $\Phi 32 \times 27$ (H)mm



**S24-05**  
Specification:  $\Phi 24/410$   
Size:  $\Phi 27 \times 48$ (H)mm



**S20-06**  
Specification:  $\Phi 20/410$   
Size:  $\Phi 24 \times 41$ (H)mm



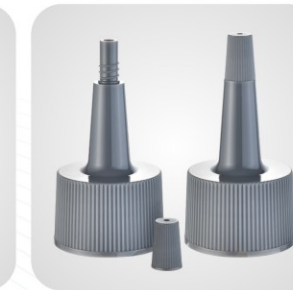
**S24-20 (matte)**  
Specification:  $\Phi 24/410$   
Size:  $\Phi 27 \times 46$ (H)mm



**S24-21**  
Specification:  $\Phi 24/410$   
Size:  $\Phi 28 \times 48$ (H)mm



**S24-22**  
Specification:  $\Phi 24/410$   
Size:  $\Phi 27 \times 43$ (H)mm



**S24-23**  
Specification:  $\Phi 24/410$   
Size:  $\Phi 27 \times 51$ (H)mm



**S24-06**  
Specification:  $\Phi 24/410$   
Size:  $\Phi 28 \times 42$ (H)mm



**S24A-06**  
Specification:  $\Phi 24/410$   
Size:  $\Phi 27 \times 44$ (H)mm



**S24B-06**  
Specification:  $\Phi 24/410$   
Size:  $\Phi 27 \times 44$ (H)mm



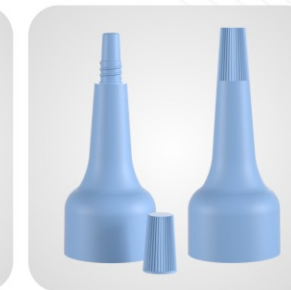
**S28-06**  
Specification:  $\Phi 28/410$   
Size:  $\Phi 31 \times 46$ (H)mm



**S24-24**  
Specification:  $\Phi 24/410$   
Size:  $\Phi 28 \times 56$ (H)mm



**S28-24**  
Specification:  $\Phi 28/400$   
Size:  $\Phi 31 \times 57$ (H)mm



**S20-25 (matte)**  
Specification:  $\Phi 20/410$   
Size:  $\Phi 22 \times 55$ (H)mm



**S24-25 (matte)**  
Specification:  $\Phi 24/410$   
Size:  $\Phi 27 \times 59$ (H)mm



**S38-06**  
Specification:  $\Phi 38/400$   
Size:  $\Phi 41 \times 41$ (H)mm



**S20-07**  
Specification:  $\Phi 20/410$   
Size:  $\Phi 24 \times 42$ (H)mm



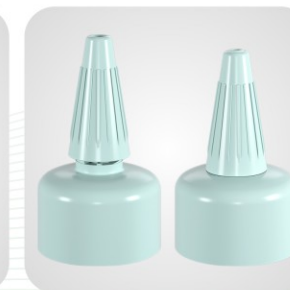
**S38-07**  
Specification:  $\Phi 38/400$   
Size:  $\Phi 41 \times 41$ (H)mm



**S38A-07**  
Specification:  $\Phi 38/400$   
Size:  $\Phi 41 \times 41$ (H)mm



**S24-26**  
Specification:  $\Phi 24/410$   
Size:  $\Phi 27 \times 48$ (H)mm



**S28-26**  
Specification:  $\Phi 28/410$   
Size:  $\Phi 31 \times 51$ (H)mm

Push Pull Cap / 推拉盖、提拉盖系列



**S24-01**  
Specification: Φ24/410  
Size: Φ27x35(H)mm



**S28-01**  
Specification: Φ28/410  
Size: Φ31x36(H)mm



**S28A-01**  
Specification: Φ28/410  
Size: Φ31x36(H)mm



**S28B-01**  
Specification: Φ28/410  
Size: Φ31x36(H)mm



**S28A-02**  
Specification: Φ28/410  
Size: Φ31x36(H)mm



**S28B-02**  
Specification: Φ28/410  
Size: Φ31x36(H)mm



**S24-08 (matte)**  
Specification: Φ24/410  
Size: Φ27x33(H)mm



**S28-08**  
Specification: Φ28/410  
Size: Φ31x33(H)mm



**S28-09**  
Specification: Φ28/410  
Size: Φ31x38(H)mm



**S24-10 (matte)**  
Specification: Φ24/410  
Size: Φ27x33(H)mm



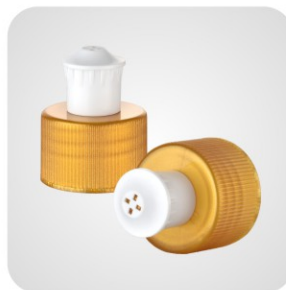
**S28-10**  
Specification: Φ28/410  
Size: Φ31x33(H)mm



**S24-11 (matte)**  
Specification: Φ24/410  
Size: Φ27x34(H)mm



**S28-11**  
Specification: Φ28/410  
Size: Φ31x34(H)mm



**S24-12**  
Specification: Φ24/410  
Size: Φ27x33(H)mm



**S28-12**  
Specification: Φ28/400  
Size: Φ31x27(H)mm



**S28-13**  
Specification: Φ28/410  
Size: Φ31x35(H)mm

Silicone Cap / 胶阀盖系列

Silicone Valve



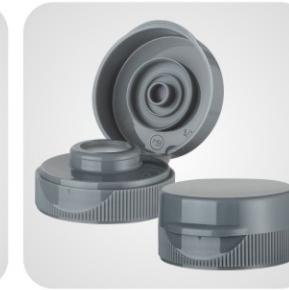
Specification: Φ16.2  
Incision: 5x5mm, 8x8mm



Specification: Φ9.5  
Incision: 3x3mm, 5x5mm



**V33-01**  
Specification: Φ33/400  
Size: Φ35x20(H)mm  
Valve: Φ9.5mm



**V38-01**  
Specification: Φ38/400  
Size: Φ41x20(H)mm  
Valve: Φ16.2mm



**V33-02**  
Specification: Φ33/400  
Size: Φ56x26(H)mm  
Valve: Φ9.5mm



**V28-03**  
Specification: Φ28/400  
Size: Φ31x18(H)mm  
Valve: Φ9.5mm



**V38-03**  
Specification: Φ38/400  
Size: Φ40x23(H)mm  
Valve: Φ16.2mm



**V32-04 (matte)**  
Specification: Φ32/410  
Size: Φ66x43(H)mm  
Valve: Φ16.2mm



**V28-05 (matte)**  
Specification: Φ28/410  
Size: Φ76x32(H)mm  
Valve: Φ16.2mm



**V31-06**  
Specification: Φ31/400  
Size: Φ33x20(H)mm  
Valve: Φ16.2mm



**V24-07 (matte)**  
Specification: Φ24/410  
Size: Φ27x24(H)mm  
Valve: Φ9.5mm



**V38-08**  
Specification: Φ38/400  
Size: Φ40x21(H)mm  
Valve: Φ9.5mm



**V28-09 (定制款)**  
Specification: Φ28/410  
Size: Φ50x26(H)mm  
Valve: Φ16.2mm



**V38-10**  
Specification: Φ38/400  
Size: Φ40x32(H)mm



**V28-11 (matte)**  
Specification: Φ28/410  
Size: Φ56x30(H)mm



**V38-12 (matte)**  
Specification: Φ38/400  
Size: Φ55x23(H)mm



**V38-14 (matte)**  
Specification: Φ38/400  
Size: Φ48x23(H)mm

# CREAM PUMP

## 粉泵系列

产品名称: 粉泵

产品材质: PP  
 产品规格: 螺纹22, 24  
 产品容量: 0.5ml/T  
 产品颜色: 根据客户需要选择氧化铝/UV等工艺  
 质量标准: ISO 9001

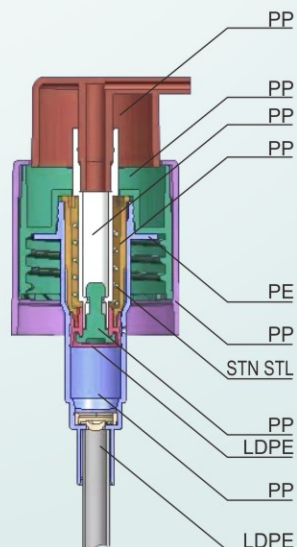
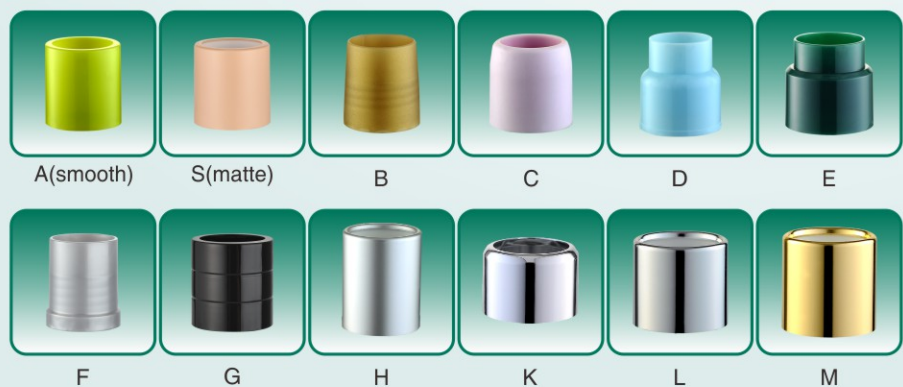
性能特点:  
 1) 外置弹簧 (弹簧不与液体接触, 更环保)  
 2) 头帽可以任意定位角度  
 3) 精细的设计, 防止液体渗漏。  
 4) 产品起泵顺畅, 快速出液。  
 5) 密封性好, 抗腐蚀性强, 使用方便, 经济耐用、安全符合质量标准。

产品应用: 乳液, 洗手液, 卸妆油, 生物医药, 化妆品包材

### Actuator Option.



### Closure Option.



**HB-501A**  
 Specification:  $\Phi 22/410$   $\Phi 24/410$   
 Discharge Rate:  $0.5 \pm 0.05\text{ml/T}$



**HB-501F (定制款)**  
 Specification:  $\Phi 22/415$   
 Discharge Rate:  $0.5 \pm 0.05\text{ml/T}$



**HB-501G**  
 Specification:  $\Phi 22/410$   $\Phi 24/410$   
 Discharge Rate:  $0.5 \pm 0.05\text{ml/T}$



**HB-501L**  
 Specification:  $\Phi 22/400$   $\Phi 24/400$   
 Discharge Rate:  $0.5 \pm 0.05\text{ml/T}$



**HB-501M**  
 Specification:  $\Phi 22/410$   $\Phi 24/410$   
 Discharge Rate:  $0.5 \pm 0.05\text{ml/T}$



**HB-501H**  
 Specification:  $\Phi 22/415$   $\Phi 24/415$   
 Discharge Rate:  $0.5 \pm 0.05\text{ml/T}$



**HB-502A**  
 Specification:  $\Phi 22/410$   $\Phi 24/410$   
 Discharge Rate:  $0.5 \pm 0.05\text{ml/T}$



**HB-502F**  
 Specification:  $\Phi 22/415$   
 Discharge Rate:  $0.5 \pm 0.05\text{ml/T}$



**HB-502G**  
 Specification:  $\Phi 22/410$   $\Phi 24/410$   
 Discharge Rate:  $0.5 \pm 0.05\text{ml/T}$



**HB-502L**  
 Specification:  $\Phi 22/400$   $\Phi 24/400$   
 Discharge Rate:  $0.5 \pm 0.05\text{ml/T}$



**HB-502M**  
 Specification:  $\Phi 22/410$   $\Phi 24/410$   
 Discharge Rate:  $0.5 \pm 0.05\text{ml/T}$



**HB-502H**  
 Specification:  $\Phi 22/415$   $\Phi 24/415$   
 Discharge Rate:  $0.5 \pm 0.05\text{ml/T}$



**HB-503B**  
Specification:  $\Phi 22/410$   
Discharge Rate:  $0.5 \pm 0.05\text{ml/T}$



**HB-503F**  
Specification:  $\Phi 22/415$   
Discharge Rate:  $0.5 \pm 0.05\text{ml/T}$



**HB-503G**  
Specification:  $\Phi 22/410$   $\Phi 24/410$   
Discharge Rate:  $0.5 \pm 0.05\text{ml/T}$



**HB-503L**  
Specification:  $\Phi 22/400$   $\Phi 24/400$   
Discharge Rate:  $0.5 \pm 0.05\text{ml/T}$



**HB-504M**  
Specification:  $\Phi 22/410$   $\Phi 24/410$   
Discharge Rate:  $0.5 \pm 0.05\text{ml/T}$



**HB-504H**  
Specification:  $\Phi 22/415$   $\Phi 24/415$   
Discharge Rate:  $0.5 \pm 0.05\text{ml/T}$



**HB-505A**  
Specification:  $\Phi 22/410$   $\Phi 24/410$   
Discharge Rate:  $0.5 \pm 0.05\text{ml/T}$



**HB-505D**  
Specification:  $\Phi 22/410$   
Discharge Rate:  $0.5 \pm 0.05\text{ml/T}$



**HB-503M**  
Specification:  $\Phi 22/410$   $\Phi 24/410$   
Discharge Rate:  $0.5 \pm 0.05\text{ml/T}$



**HB-503H**  
Specification:  $\Phi 22/415$   $\Phi 24/415$   
Discharge Rate:  $0.5 \pm 0.05\text{ml/T}$



**HB-504A**  
Specification:  $\Phi 22/410$   $\Phi 24/410$   
Discharge Rate:  $0.5 \pm 0.05\text{ml/T}$



**HB-504C**  
Specification:  $\Phi 24/410$   
Discharge Rate:  $0.5 \pm 0.05\text{ml/T}$



**HB-505F**  
Specification:  $\Phi 22/415$   
Discharge Rate:  $0.5 \pm 0.05\text{ml/T}$



**HB-505G**  
Specification:  $\Phi 22/410$   $\Phi 24/410$   
Discharge Rate:  $0.5 \pm 0.05\text{ml/T}$



**HB-505L**  
Specification:  $\Phi 22/400$   $\Phi 24/400$   
Discharge Rate:  $0.5 \pm 0.05\text{ml/T}$



**HB-505M**  
Specification:  $\Phi 22/410$   $\Phi 24/410$   
Discharge Rate:  $0.5 \pm 0.05\text{ml/T}$



**HB-504F**  
Specification:  $\Phi 22/415$   
Discharge Rate:  $0.5 \pm 0.05\text{ml/T}$



**HB-504G**  
Specification:  $\Phi 22/410$   $\Phi 24/410$   
Discharge Rate:  $0.5 \pm 0.05\text{ml/T}$



**HB-504S**  
Specification:  $\Phi 22/410$   $\Phi 24/410$   
Discharge Rate:  $0.5 \pm 0.05\text{ml/T}$



**HB-504L**  
Specification:  $\Phi 22/400$   $\Phi 24/400$   
Discharge Rate:  $0.5 \pm 0.05\text{ml/T}$



**HB-505H**  
Specification:  $\Phi 22/415$   $\Phi 24/415$   
Discharge Rate:  $0.5 \pm 0.05\text{ml/T}$



**HB-506A**  
Specification:  $\Phi 22/410$   $\Phi 24/410$   
Discharge Rate:  $0.5 \pm 0.05\text{ml/T}$



**HB-506E**  
Specification:  $\Phi 24/410$   
Discharge Rate:  $0.5 \pm 0.05\text{ml/T}$



**HB-506F**  
Specification:  $\Phi 22/415$   
Discharge Rate:  $0.5 \pm 0.05\text{ml/T}$



**HB-506G**  
Specification:  $\Phi 22/410$   $\Phi 24/410$   
Discharge Rate:  $0.5 \pm 0.05\text{ml/T}$



**HB-506K**  
Specification:  $\Phi 24/410$   
Discharge Rate:  $0.5 \pm 0.05\text{ml/T}$



**HB-506L**  
Specification:  $\Phi 22/400$   $\Phi 24/400$   
Discharge Rate:  $0.5 \pm 0.05\text{ml/T}$



**HB-506M**  
Specification:  $\Phi 22/410$   $\Phi 24/410$   
Discharge Rate:  $0.5 \pm 0.05\text{ml/T}$



**HB-508F**  
Specification:  $\Phi 22/415$   
Discharge Rate:  $0.5 \pm 0.05\text{ml/T}$



**HB-508G**  
Specification:  $\Phi 22/410$   $\Phi 24/410$   
Discharge Rate:  $0.5 \pm 0.05\text{ml/T}$



**HB-508L**  
Specification:  $\Phi 22/400$   $\Phi 24/400$   
Discharge Rate:  $0.5 \pm 0.05\text{ml/T}$



**HB-508M**  
Specification:  $\Phi 22/410$   $\Phi 24/410$   
Discharge Rate:  $0.5 \pm 0.05\text{ml/T}$



**HB-506H**  
Specification:  $\Phi 22/415$   $\Phi 24/415$   
Discharge Rate:  $0.5 \pm 0.05\text{ml/T}$



**HB-507A**  
Specification:  $\Phi 22/410$   $\Phi 24/410$   
Discharge Rate:  $0.5 \pm 0.05\text{ml/T}$



**HB-507F**  
Specification:  $\Phi 22/415$   
Discharge Rate:  $0.5 \pm 0.05\text{ml/T}$



**HB-507G**  
Specification:  $\Phi 22/410$   $\Phi 24/410$   
Discharge Rate:  $0.5 \pm 0.05\text{ml/T}$



**HB-508H**  
Specification:  $\Phi 22/415$   $\Phi 24/415$   
Discharge Rate:  $0.5 \pm 0.05\text{ml/T}$



**HB-509A**  
Specification:  $\Phi 22/410$   $\Phi 24/410$   
Discharge Rate:  $0.5 \pm 0.05\text{ml/T}$



**HB-509F**  
Specification:  $\Phi 22/415$   
Discharge Rate:  $0.5 \pm 0.05\text{ml/T}$



**HB-509G**  
Specification:  $\Phi 22/410$   $\Phi 24/410$   
Discharge Rate:  $0.5 \pm 0.05\text{ml/T}$



**HB-507L**  
Specification:  $\Phi 22/400$   $\Phi 24/400$   
Discharge Rate:  $0.5 \pm 0.05\text{ml/T}$



**HB-507M**  
Specification:  $\Phi 22/410$   $\Phi 24/410$   
Discharge Rate:  $0.5 \pm 0.05\text{ml/T}$



**HB-507H**  
Specification:  $\Phi 22/415$   $\Phi 24/415$   
Discharge Rate:  $0.5 \pm 0.05\text{ml/T}$



**HB-508A**  
Specification:  $\Phi 22/410$   $\Phi 24/410$   
Discharge Rate:  $0.5 \pm 0.05\text{ml/T}$



**HB-509L**  
Specification:  $\Phi 22/400$   $\Phi 24/400$   
Discharge Rate:  $0.5 \pm 0.05\text{ml/T}$



**HB-509M**  
Specification:  $\Phi 22/410$   $\Phi 24/410$   
Discharge Rate:  $0.5 \pm 0.05\text{ml/T}$



**HB-509H**  
Specification:  $\Phi 22/415$   $\Phi 24/415$   
Discharge Rate:  $0.5 \pm 0.05\text{ml/T}$



**HB-510A**  
Specification:  $\Phi 22/410$   $\Phi 24/410$   
Discharge Rate:  $0.5 \pm 0.05\text{ml/T}$



**HB-510F**  
Specification:  $\Phi 22/415$   
Discharge Rate:  $0.5 \pm 0.05\text{ml/T}$



**HB-510G**  
Specification:  $\Phi 22/410$   $\Phi 24/410$   
Discharge Rate:  $0.5 \pm 0.05\text{ml/T}$



**HB-510L**  
Specification:  $\Phi 22/400$ ,  $\Phi 24/400$   
Discharge Rate:  $0.5 \pm 0.05\text{ml/T}$



**HB-510M**  
Specification:  $\Phi 22/410$ ,  $\Phi 24/410$   
Discharge Rate:  $0.5 \pm 0.05\text{ml/T}$



**HB-510H**  
Specification:  $\Phi 22/415$ ,  $\Phi 24/415$   
Discharge Rate:  $0.5 \pm 0.05\text{ml/T}$



**HB-511A**  
Specification:  $\Phi 22/410$ ,  $\Phi 24/410$   
Discharge Rate:  $0.5 \pm 0.05\text{ml/T}$



**HB-511F**  
Specification:  $\Phi 22/415$   
Discharge Rate:  $0.5 \pm 0.05\text{ml/T}$



**HB-511G**  
Specification:  $\Phi 22/410$   $\Phi 24/410$   
Discharge Rate:  $0.5 \pm 0.05\text{ml/T}$



**HB-511L**  
Specification:  $\Phi 22/400$ ,  $\Phi 24/400$   
Discharge Rate:  $0.5 \pm 0.05\text{ml/T}$



**HB-511M**  
Specification:  $\Phi 22/410$ ,  $\Phi 24/410$   
Discharge Rate:  $0.5 \pm 0.05\text{ml/T}$



**HB-511H**  
Specification:  $\Phi 22/415$ ,  $\Phi 24/415$   
Discharge Rate:  $0.5 \pm 0.05\text{ml/T}$

# 200 Series



产品名称: 卸妆油泵

产品材质: PP

产品规格: 螺纹20, 24, 28

产品喷量: 1.0cc

产品颜色: 根据客户需要选择氧化铝 / UV等工艺

产品应用: 卸妆油、清洗洗涤 (洗手液, 洗发水, 沐浴露)

质量标准: ISO 9001

## Nozzle Option.



HB-202



HB-203



HB-204



HB-205



HB-206

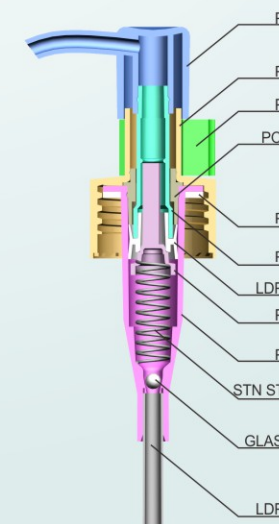
## Piston Option.



A: PE



B: Silicone





**HB-202A**  
Specification:  $\Phi 20/410$   
Discharge Rate: 0.9-1.1ml/T



**HB-202B**  
Specification:  $\Phi 24/410$   
Discharge Rate: 0.9-1.1ml/T



**HB-202C**  
Specification:  $\Phi 28/410$   
Discharge Rate: 0.9-1.1ml/T



**HB-202D**  
Specification:  $\Phi 24/410$   
Discharge Rate: 0.9-1.1ml/T



**HB-203F**  
Specification:  $\Phi 24/410$   
Discharge Rate: 0.9-1.1ml/T



**HB-203G**  
Specification:  $\Phi 24/410$   
Discharge Rate: 0.9-1.1ml/T



**HB-204A**  
Specification:  $\Phi 20/410$   
Discharge Rate: 0.9-1.1ml/T



**HB-204B**  
Specification:  $\Phi 24/410$   
Discharge Rate: 0.9-1.1ml/T



**HB-202E**  
Specification:  $\Phi 24/410$   
Discharge Rate: 0.9-1.1ml/T



**HB-202F**  
Specification:  $\Phi 24/410$   
Discharge Rate: 0.9-1.1ml/T



**HB-202G**  
Specification:  $\Phi 24/410$   
Discharge Rate: 0.9-1.1ml/T



**HB-203A**  
Specification:  $\Phi 20/410$   
Discharge Rate: 0.9-1.1ml/T



**HB-204C**  
Specification:  $\Phi 28/410$   
Discharge Rate: 0.9-1.1ml/T



**HB-204D**  
Specification:  $\Phi 24/410$   
Discharge Rate: 0.9-1.1ml/T



**HB-204E**  
Specification:  $\Phi 24/410$   
Discharge Rate: 0.9-1.1ml/T



**HB-204F**  
Specification:  $\Phi 24/410$   
Discharge Rate: 0.9-1.1ml/T



**HB-203B**  
Specification:  $\Phi 24/410$   
Discharge Rate: 0.9-1.1ml/T



**HB-203C**  
Specification:  $\Phi 28/410$   
Discharge Rate: 0.9-1.1ml/T



**HB-203D**  
Specification:  $\Phi 24/410$   
Discharge Rate: 0.9-1.1ml/T



**HB-203E**  
Specification:  $\Phi 24/410$   
Discharge Rate: 0.9-1.1ml/T



**HB-204G**  
Specification:  $\Phi 24/410$   
Discharge Rate: 0.9-1.1ml/T



**HB-205A**  
Specification:  $\Phi 20/410$   
Discharge Rate: 0.9-1.1ml/T



**HB-205B**  
Specification:  $\Phi 24/410$   
Discharge Rate: 0.9-1.1ml/T



**HB-205C**  
Specification:  $\Phi 28/410$   
Discharge Rate: 0.9-1.1ml/T



**HB-205D**  
Specification:  $\Phi 24/410$   
Discharge Rate: 0.9-1.1ml/T



**HB-205E**  
Specification:  $\Phi 24/410$   
Discharge Rate: 0.9-1.1ml/T



**HB-205F**  
Specification:  $\Phi 24/410$   
Discharge Rate: 0.9-1.1ml/T



**HB-205G**  
Specification:  $\Phi 24/410$   
Discharge Rate: 0.9-1.1ml/T



**HB-202AK**  
Specification:  $\Phi 20/410$   
Discharge Rate: 0.9-1.1ml/T



**HB-202BK**  
Specification:  $\Phi 24/410$   
Discharge Rate: 0.9-1.1ml/T



**HB-202CK**  
Specification:  $\Phi 28/410$   
Discharge Rate: 0.9-1.1ml/T



**HB-202DK**  
Specification:  $\Phi 24/410$   
Discharge Rate: 0.9-1.1ml/T



**HB-206A**  
Specification:  $\Phi 20/410$   
Discharge Rate: 0.9-1.1ml/T



**HB-206B**  
Specification:  $\Phi 24/410$   
Discharge Rate: 0.9-1.1ml/T



**HB-206C**  
Specification:  $\Phi 28/410$   
Discharge Rate: 0.9-1.1ml/T



**HB-206D**  
Specification:  $\Phi 24/410$   
Discharge Rate: 0.9-1.1ml/T



**HB-202EK**  
Specification:  $\Phi 24/410$   
Discharge Rate: 0.9-1.1ml/T



**HB-202FK**  
Specification:  $\Phi 24/410$   
Discharge Rate: 0.9-1.1ml/T



**HB-202GK**  
Specification:  $\Phi 24/410$   
Discharge Rate: 0.9-1.1ml/T



**HB-206E**  
Specification:  $\Phi 24/410$   
Discharge Rate: 0.9-1.1ml/T



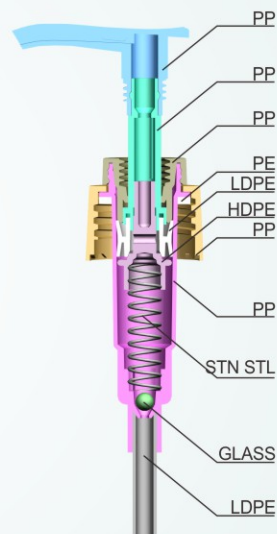
**HB-206F**  
Specification:  $\Phi 24/410$   
Discharge Rate: 0.9-1.1ml/T



**HB-206G**  
Specification:  $\Phi 24/410$   
Discharge Rate: 0.9-1.1ml/T

# LOTION PUMP

乳液泵系列



产品名称: 乳液泵

产品材质: PP  
 产品规格: 螺纹 $\varnothing 24, \varnothing 28$   
 产品喷量: 2.0cc  
 产品颜色: 根据客户需要选择氧化铝 / UV等工艺  
 质量标准: ISO 9001  
 产品应用: 清洗洗涤 (洗手液, 洗发水, 沐浴露) 生物医药, 化妆品包装, 化工

### Closure Option.



蕾丝/Ribbed    光边/Smooth    氧化铝/Alu.

### Actuator Option.



## 211 Series



**HB-211A**  
 Specification:  $\Phi 24/410$   
 Discharge Rate: 1.8-2.2ml/T



**HB-211B**  
 Specification:  $\Phi 24/415$   
 Discharge Rate: 1.8-2.2ml/T



**HB-211C**  
 Specification:  $\Phi 28/400$   
 Discharge Rate: 1.8-2.2ml/T



**HB-211D**  
 Specification:  $\Phi 28/410$   
 Discharge Rate: 1.8-2.2ml/T



**HB-211E**  
 Specification:  $\Phi 24/415$   
 Discharge Rate: 1.8-2.2ml/T



**HB-211F**  
 Specification:  $\Phi 28/410$   
 Discharge Rate: 1.8-2.2ml/T



**HB-211G**  
 Specification:  $\Phi 24/415$   
 Discharge Rate: 1.8-2.2ml/T



**HB-211H**  
 Specification:  $\Phi 28/415$   
 Discharge Rate: 1.8-2.2ml/T



**HB-211J**  
 Specification:  $\Phi 28/415$   
 Discharge Rate: 1.8-2.2ml/T

## 212 Series



**HB-212A**  
Specification:  $\Phi 24/410$   
Discharge Rate: 1.8-2.2ml/T



**HB-212B**  
Specification:  $\Phi 24/415$   
Discharge Rate: 1.8-2.2ml/T



**HB-212C**  
Specification:  $\Phi 28/400$   
Discharge Rate: 1.8-2.2ml/T



**HB-212D**  
Specification:  $\Phi 28/410$   
Discharge Rate: 1.8-2.2ml/T



**HB-212E**  
Specification:  $\Phi 24/410$   
Discharge Rate: 1.8-2.2ml/T



**HB-212F**  
Specification:  $\Phi 28/410$   
Discharge Rate: 1.8-2.2ml/T



**HB-212G**  
Specification:  $\Phi 24/415$   
Discharge Rate: 1.8-2.2ml/T



**HB-212H**  
Specification:  $\Phi 28/415$   
Discharge Rate: 1.8-2.2ml/T



**HB-212J**  
Specification:  $\Phi 28/415$   
Discharge Rate: 1.8-2.2ml/T

## 213 Series



**HB-213A**  
Specification:  $\Phi 24/410$   
Discharge Rate: 1.8-2.2ml/T



**HB-213B**  
Specification:  $\Phi 24/415$   
Discharge Rate: 1.8-2.2ml/T



**HB-213C**  
Specification:  $\Phi 28/400$   
Discharge Rate: 1.8-2.2ml/T



**HB-213D**  
Specification:  $\Phi 28/410$   
Discharge Rate: 1.8-2.2ml/T



**HB-213E**  
Specification:  $\Phi 24/410$   
Discharge Rate: 1.8-2.2ml/T



**HB-213F**  
Specification:  $\Phi 28/410$   
Discharge Rate: 1.8-2.2ml/T



**HB-213G**  
Specification:  $\Phi 24/415$   
Discharge Rate: 1.8-2.2ml/T



**HB-213H**  
Specification:  $\Phi 28/415$   
Discharge Rate: 1.8-2.2ml/T



**HB-213J**  
Specification:  $\Phi 28/415$   
Discharge Rate: 1.8-2.2ml/T

## 214 Series

## 215 Series



**HB-214A**  
Specification:  $\Phi 24/410$   
Discharge Rate: 1.8-2.2ml/T



**HB-214B**  
Specification:  $\Phi 24/415$   
Discharge Rate: 1.8-2.2ml/T



**HB-214C**  
Specification:  $\Phi 28/400$   
Discharge Rate: 1.8-2.2ml/T



**HB-215A**  
Specification:  $\Phi 24/410$   
Discharge Rate: 1.8-2.2ml/T



**HB-215B**  
Specification:  $\Phi 24/415$   
Discharge Rate: 1.8-2.2ml/T



**HB-215C**  
Specification:  $\Phi 28/400$   
Discharge Rate: 1.8-2.2ml/T



**HB-214D**  
Specification:  $\Phi 28/410$   
Discharge Rate: 1.8-2.2ml/T



**HB-214E**  
Specification:  $\Phi 24/410$   
Discharge Rate: 1.8-2.2ml/T



**HB-214F**  
Specification:  $\Phi 28/410$   
Discharge Rate: 1.8-2.2ml/T



**HB-215D**  
Specification:  $\Phi 28/410$   
Discharge Rate: 1.8-2.2ml/T



**HB-215E**  
Specification:  $\Phi 24/410$   
Discharge Rate: 1.8-2.2ml/T



**HB-215F**  
Specification:  $\Phi 28/410$   
Discharge Rate: 1.8-2.2ml/T



**HB-214G**  
Specification:  $\Phi 24/415$   
Discharge Rate: 1.8-2.2ml/T



**HB-214H**  
Specification:  $\Phi 28/415$   
Discharge Rate: 1.8-2.2ml/T



**HB-214J**  
Specification:  $\Phi 28/415$   
Discharge Rate: 1.8-2.2ml/T



**HB-215G**  
Specification:  $\Phi 24/415$   
Discharge Rate: 1.8-2.2ml/T



**HB-215H**  
Specification:  $\Phi 28/415$   
Discharge Rate: 1.8-2.2ml/T



**HB-215J**  
Specification:  $\Phi 28/415$   
Discharge Rate: 1.8-2.2ml/T

## 216 Series

## 217 Series



**HB-216A**  
Specification:  $\Phi 24/410$   
Discharge Rate: 1.8-2.2ml/T



**HB-216B**  
Specification:  $\Phi 24/415$   
Discharge Rate: 1.8-2.2ml/T



**HB-216C**  
Specification:  $\Phi 28/400$   
Discharge Rate: 1.8-2.2ml/T



**HB-217A**  
Specification:  $\Phi 24/410$   
Discharge Rate: 1.8-2.2ml/T



**HB-217B**  
Specification:  $\Phi 24/415$   
Discharge Rate: 1.8-2.2ml/T



**HB-217C**  
Specification:  $\Phi 28/400$   
Discharge Rate: 1.8-2.2ml/T



**HB-216D**  
Specification:  $\Phi 28/410$   
Discharge Rate: 1.8-2.2ml/T



**HB-216E**  
Specification:  $\Phi 24/410$   
Discharge Rate: 1.8-2.2ml/T



**HB-216F**  
Specification:  $\Phi 28/410$   
Discharge Rate: 1.8-2.2ml/T



**HB-217D**  
Specification:  $\Phi 28/410$   
Discharge Rate: 1.8-2.2ml/T



**HB-217E**  
Specification:  $\Phi 24/410$   
Discharge Rate: 1.8-2.2ml/T



**HB-217F**  
Specification:  $\Phi 28/410$   
Discharge Rate: 1.8-2.2ml/T



**HB-216G**  
Specification:  $\Phi 24/415$   
Discharge Rate: 1.8-2.2ml/T



**HB-216H**  
Specification:  $\Phi 28/415$   
Discharge Rate: 1.8-2.2ml/T



**HB-216J**  
Specification:  $\Phi 28/415$   
Discharge Rate: 1.8-2.2ml/T



**HB-217G**  
Specification:  $\Phi 24/415$   
Discharge Rate: 1.8-2.2ml/T



**HB-217H**  
Specification:  $\Phi 28/415$   
Discharge Rate: 1.8-2.2ml/T



**HB-217J**  
Specification:  $\Phi 28/415$   
Discharge Rate: 1.8-2.2ml/T

## 218 Series



**HB-218A**  
Specification:  $\Phi 24/410$   
Discharge Rate: 1.8-2.2ml/T



**HB-218B**  
Specification:  $\Phi 24/415$   
Discharge Rate: 1.8-2.2ml/T



**HB-218C**  
Specification:  $\Phi 28/400$   
Discharge Rate: 1.8-2.2ml/T



**HB-218C-2**  
Specification:  $\Phi 28/400$   
Discharge Rate: 1.8-2.2ml/T



**HB-218D**  
Specification:  $\Phi 28/410$   
Discharge Rate: 1.8-2.2ml/T



**HB-218D-2**  
Specification:  $\Phi 28/410$   
Discharge Rate: 1.8-2.2ml/T



**HB-218E**  
Specification:  $\Phi 24/410$   
Discharge Rate: 1.8-2.2ml/T



**HB-218F**  
Specification:  $\Phi 28/410$   
Discharge Rate: 1.8-2.2ml/T



**HB-218G**  
Specification:  $\Phi 24/415$   
Discharge Rate: 1.8-2.2ml/T



**HB-218H**  
Specification:  $\Phi 28/415$   
Discharge Rate: 1.8-2.2ml/T



**HB-218J**  
Specification:  $\Phi 28/415$   
Discharge Rate: 1.8-2.2ml/T

## 219 Series



**HB-219A**  
Specification:  $\Phi 24/410$   
Discharge Rate: 1.8-2.2ml/T



**HB-219B**  
Specification:  $\Phi 24/415$   
Discharge Rate: 1.8-2.2ml/T



**HB-219C**  
Specification:  $\Phi 28/400$   
Discharge Rate: 1.8-2.2ml/T



**HB-219D**  
Specification:  $\Phi 28/410$   
Discharge Rate: 1.8-2.2ml/T



**HB-219E**  
Specification:  $\Phi 24/410$   
Discharge Rate: 1.8-2.2ml/T



**HB-219F**  
Specification:  $\Phi 28/410$   
Discharge Rate: 1.8-2.2ml/T



**HB-219N**  
Specification:  $\Phi 24/410$   
Discharge Rate: 1.8-2.2ml/T



**HB-219M**  
Specification:  $\Phi 28/410$   
Discharge Rate: 1.8-2.2ml/T



**HB-219G**  
Specification:  $\Phi 24/415$   
Discharge Rate: 1.8-2.2ml/T



**HB-219H**  
Specification:  $\Phi 28/415$   
Discharge Rate: 1.8-2.2ml/T



**HB-219J**  
Specification:  $\Phi 28/415$   
Discharge Rate: 1.8-2.2ml/T

## 221 Series



**HB-221A**  
Specification:  $\Phi 24/410$   
Discharge Rate: 1.8-2.2ml/T



**HB-221B**  
Specification:  $\Phi 24/415$   
Discharge Rate: 1.8-2.2ml/T



**HB-221C**  
Specification:  $\Phi 28/400$   
Discharge Rate: 1.8-2.2ml/T



**HB-221D**  
Specification:  $\Phi 28/410$   
Discharge Rate: 1.8-2.2ml/T



**HB-221E**  
Specification:  $\Phi 24/410$   
Discharge Rate: 1.8-2.2ml/T



**HB-221F**  
Specification:  $\Phi 28/410$   
Discharge Rate: 1.8-2.2ml/T



**HB-221G**  
Specification:  $\Phi 24/415$   
Discharge Rate: 1.8-2.2ml/T



**HB-221H**  
Specification:  $\Phi 28/415$   
Discharge Rate: 1.8-2.2ml/T



**HB-221J**  
Specification:  $\Phi 28/415$   
Discharge Rate: 1.8-2.2ml/T

## 222 Series



**HB-222A**  
Specification:  $\Phi 24/410$   
Discharge Rate: 1.8-2.2ml/T



**HB-222B**  
Specification:  $\Phi 24/415$   
Discharge Rate: 1.8-2.2ml/T



**HB-222C**  
Specification:  $\Phi 28/400$   
Discharge Rate: 1.8-2.2ml/T



**HB-222D**  
Specification:  $\Phi 28/410$   
Discharge Rate: 1.8-2.2ml/T



**HB-222E**  
Specification:  $\Phi 24/410$   
Discharge Rate: 1.8-2.2ml/T



**HB-222F**  
Specification:  $\Phi 28/410$   
Discharge Rate: 1.8-2.2ml/T



**HB-222G**  
Specification:  $\Phi 24/415$   
Discharge Rate: 1.8-2.2ml/T

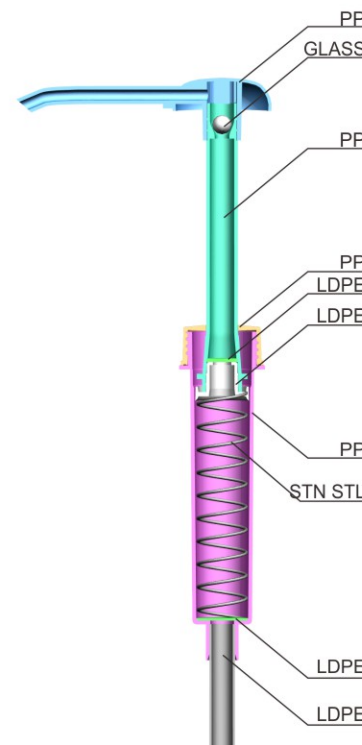


**HB-222H**  
Specification:  $\Phi 28/415$   
Discharge Rate: 1.8-2.2ml/T



**HB-222J**  
Specification:  $\Phi 28/415$   
Discharge Rate: 1.8-2.2ml/T

# 240 Series



产品名称: 乳液泵

产品材质: 食品级PP  
 产品规格: 螺纹48, 50  
 产品容量: 30.0cc  
 质量标准: ISO 9001

产品应用: 家庭式大罐装洗涤用品, 番茄酱, 巧克力酱, 生物医药, 化妆品包装, 化工

性能特点:

- 1) 精细的设计, 防止液体渗漏。
- 2) 产品起泵顺畅, 快速出液。
- 3) 容量均匀, 效果好。
- 4) 密封性较好, 抗腐蚀性较强, 使用方便, 经济耐用, 安全符合质量标准。

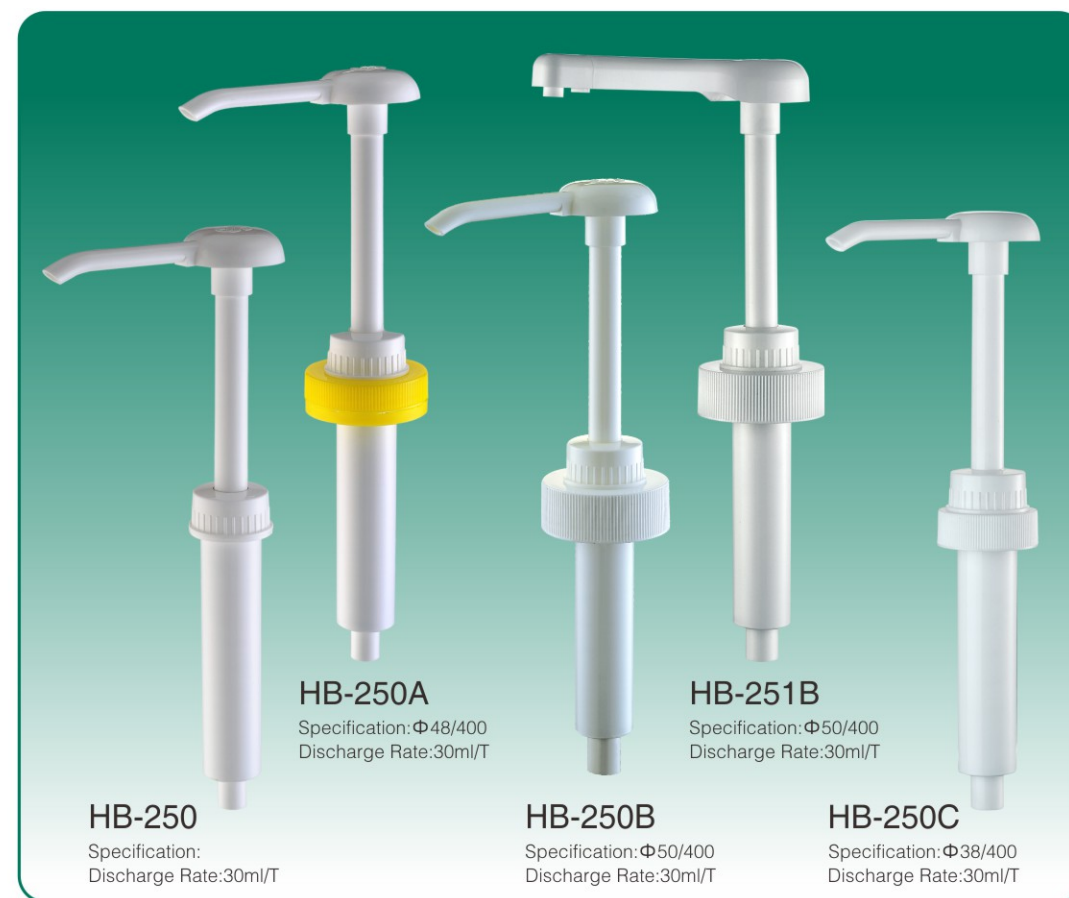
### Actuator Option.



### Closure Option.



<b>HB-241</b> Specification: Φ24/410 Discharge Rate: 1.8-2.2ml/T	<b>HB-242</b> Specification: Φ24/410 Discharge Rate: 1.8-2.2ml/T	<b>HB-243</b> Specification: Φ28/410 Discharge Rate: 1.8-2.2ml/T	<b>HB-244</b> Specification: Φ28/410 Discharge Rate: 1.8-2.2ml/T
--	--	--	--



<b>HB-250</b> Specification: Discharge Rate: 30ml/T	<b>HB-250A</b> Specification: Φ48/400 Discharge Rate: 30ml/T	<b>HB-250B</b> Specification: Φ50/400 Discharge Rate: 30ml/T	<b>HB-251B</b> Specification: Φ50/400 Discharge Rate: 30ml/T	<b>HB-250C</b> Specification: Φ38/400 Discharge Rate: 30ml/T
---	--	--	--	--

产品名称: 手扣式喷雾器

产品材质: PP  
 产品规格: 螺纹20, 24, 28  
 产品喷量: 1.2-1.4ml/T, 0.25-0.3ml/T  
 质量标准: ISO 9001

产品应用: 玻璃水, 厨房洗涤, 园艺用品, 汽车护理, 生物医药, 化妆品包装, 化工

性能特点:

- 1) 精细的设计, 防止液体渗漏。
- 2) 喷出液体定量控制, 带锁定开关。
- 3) 喷量均匀, 效果好。
- 4) 密封性较好, 抗腐蚀性较强, 使用方便, 经济耐用, 安全符合质量标准。



**HB-701**  
 Specification: Φ28/400 High:15mm



**HB-702**  
 Specification: Φ28/400 High:17mm  
 Φ28/410 High:21mm  
 Φ28/415 High:25mm



**HB-703**  
 Specification: Φ28/400 High:17mm  
 Φ28/410 High:21mm  
 Φ28/415 High:25mm



**HB-704**  
 Specification: Φ28/400 High:17mm  
 Φ28/410 High:21mm  
 Φ28/415 High:25mm



**HB-705**  
 Specification: Φ28/400 High:17mm  
 Φ28/410 High:21mm  
 Φ28/415 High:25mm



**HB-706**  
 Specification: Φ28/400 High:17mm  
 Φ28/410 High:21mm  
 Φ28/415 High:25mm



**HB-707**  
 Specification: Φ28/400 High:17mm  
 Φ28/410 High:21mm  
 Φ28/415 High:25mm



**HB-708**  
 Specification: Φ28/400 High:17mm  
 Φ28/410 High:21mm  
 Φ28/415 High:25mm



**HB-709**  
 Specification: Φ28/400 High:17mm  
 Φ28/410 High:21mm  
 Φ28/415 High:25mm



**HB-710**  
 Specification: Φ28/400 High:17mm  
 Φ28/410 High:21mm  
 Φ28/415 High:25mm



**HB-711**  
 Specification: Φ24/410  
 Discharge Rate:0.42-0.46ml/T



**HB-712**  
 Specification: Φ24/410  
 Discharge Rate:0.42-0.46ml/T



**HB-713**  
 Specification: Φ20/410  
 Discharge Rate:0.25-0.30ml/T



**HB-714**  
 Specification: Φ24/410  
 Discharge Rate:0.25-0.30ml/T



**HB-715**  
 Specification: Φ28/410  
 Discharge Rate:0.25-0.30ml/T